

Omni Antenna

2400-2900 Mhz, 5dBi Gain, Omni Antenna

Product Description:

Omni directional antenna radiate their RF energy in all directions, essentially outwards in a three dimensional spherical pattern. It is a cost effective solutions for point-to-point and multipoint application.

Applications:-

Mobile
Multipoint applications
Marine
Wi-Fi
Public wireless hotspots

Features:

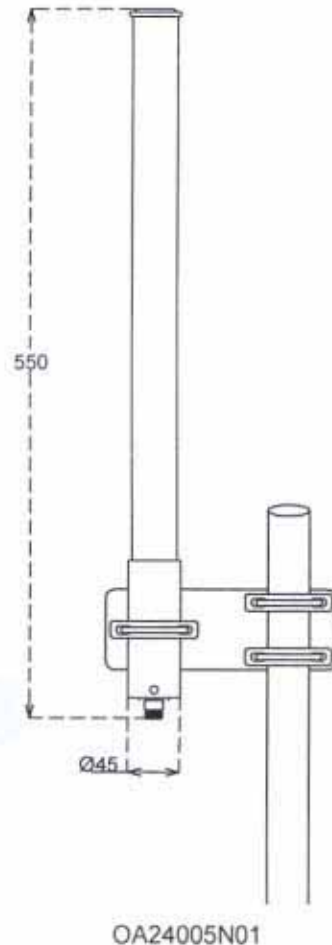
Heavy duty fiber glass radome.
The mounting pipe projects the coax to antenna connection from rain, ice, and moisture.
Cost effective.

Electrical Specifications:

Model No.	OA24005N01
Frequency Range (Mhz)	2400-2900
Return Loss (dB)	15
Power (Watts)	50
Impedance (ohms)	50
Gain (dBi)	5
Band Width (Mhz)	100

Mechanical Specifications:

Connector	N(Female)
Mounting Hardware Material	MS
Unit dimension (DiaXLength)mm	Ø45 X 550
Unit weight (Kgs)	1.4
Unit Packed Dimension (LXWXH)mm	100X100X600
Unit Packed weight (Kgs)	1.7
Radome Material	Fiber Glass filled with UV Protection



Due to continous improvement policy and efforts, dimensions are subject to change for further improvement.