

# Slim USB GPRS Modem

WIRELESS COMMUNICATIONS GMBH

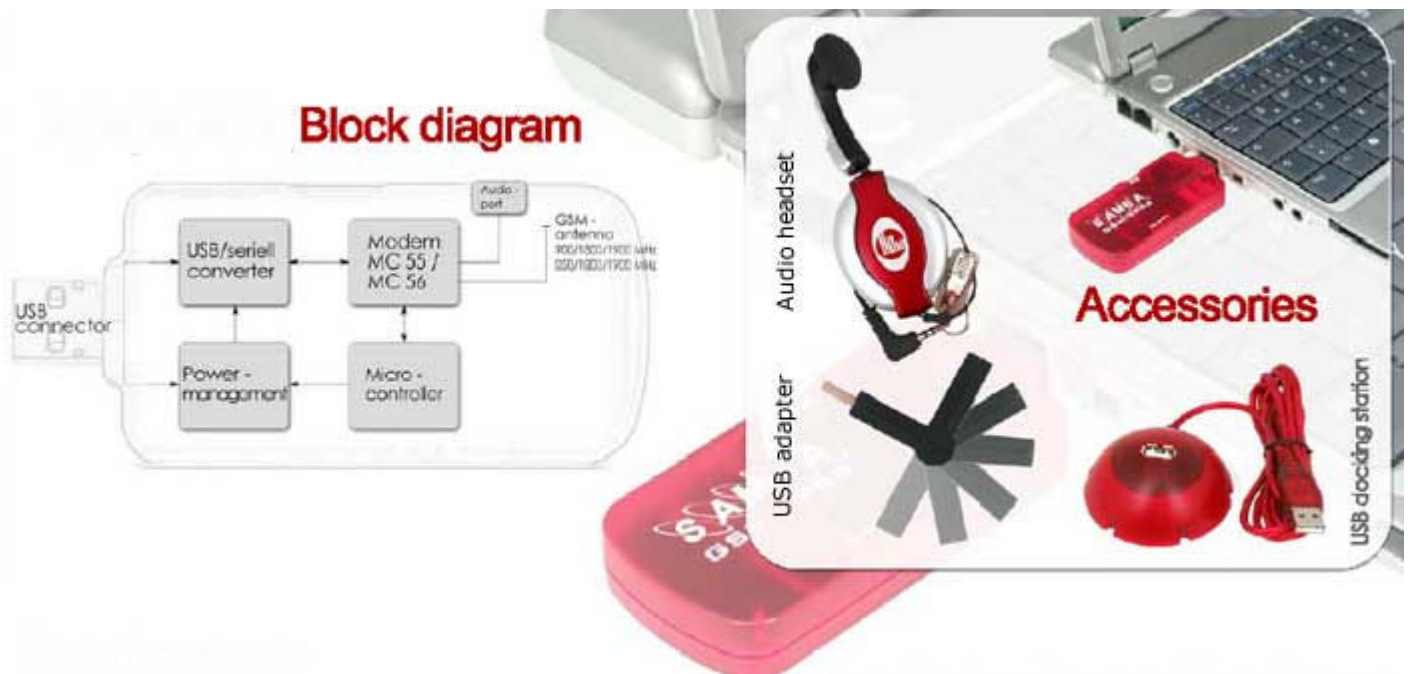
## Quad Band GSM/GPRS/EDGE Modem

- Integrated Quad Band GSM/GPRS/EDGE engine
- GSM 850/900/1800/1900 MHz
- Data, Fax, SMS, MMS
- Audio/Video streaming
- Integrated SIM interface
- GSM antenna included
- Plug-n-Play
- Integrated USB-Hub
- Very lightweight
- World-wide applicable



## Slim USB GPRS Modem

is a Plug-and-Play, compact, lightweight, wireless modem that provides EDGE, GPRS and GSM connectivity for portable, handheld computers and others. The major benefit over earlier SLIM USB GPRS MODEM GSM/GPRS modem is that SLIM USB GPRS MODEM supports EDGE and additionally offers a TCP/IP stack. SLIM USB GPRS MODEM allows subscribers to send and receive data, including digital images, web pages and photographs, with a transfer rate three times higher than possible with GSM/GPRS services. It supports MMS, SMS & fax. It can be easily controlled by using AT command for all kinds of operations. The SLIM USB GPRS MODEM is designed for use on any GSM network in the world.



## Software driver

Modem driver,  
RIL/NDIS driver – for Microsoft® Windows 2000/XP/Mobile

## Hardware Requirements

Pentium® 90 or higher With  
- CD-ROM drive  
- A valid SIM card  
- Free compatible USB Port  
- Appr. 6 Mb of free hard disk space

### General Basic

- Tri-Band GSM/GPRS modem E-GSM900/DCS1800/PCS1900 MHZ
- Class 4 (2w) for EGSM900
- Class 1 (1w) for DCS1800/PCS1900
- Small size and low power consumption
- Voice, SMS
- Fax and data transmission without extra hardware
- Internal 3 V SIM interface
- Easy remote control by AT commands for Dedicated applications
- Fully type approved according to GSM phase 2+ specifications
- Fully shielded and ready-to-use

### Electrical characteristics

- Power supply: +5 V DC (through USB port)

### Physical characteristics

- Dimensions: (L x W x H) 88.7 mm x 37.6 mm x 12.6 mm
- Weight: 79 g
- Normal range temperature: -20°C to +55°C
- Restricted operation: -30°C to -20°C and +55°C to +65°C

### Features

- Telephony (TCH/FS) and emergency calls; full rate, enhanced full rate, half rate and adaptive multirate (AMR), dual tone multi frequency function (DTMF)
- SMS (GSM and GPRS mode): text and PDU, point to point MT and MO, SMS broadcast
- GSM circuit data features: transparent and non transparent up to 9600 bps, group 3: class 1, class 2, alternate fax, MNP 2

### GPRS packet data features:

- Data uplink transfer: max. 42.8 kbps;
- Data downlink transfer: max. 85.6 kbps;
- Coding schemes CS-1 to CS-4
- WAP compliant and compliant with SMG 31

### GSM supplementary services:

- Call forwarding
- Call barring, multiparty, call waiting and call hold
- Calling line identity
- Advice of charge, USSD
- Closed user group

### Other features

- SM,FD, LD, MC, RC, ON, ME+SIM phone book management
- Fixed dialing number, SIM toolkit class 2
- SIM, network and service provider locks
- Real time clock
- Alarm management
- UCS 2 character set management