

# Patch Panel Antennas

## 824-960 / 1710-2250 Mhz, 7dBi Gain, Outdoor Patch Antenna

### Product Description:

Patch Antenna's are quite directional as they have most of their power radiated in one direction in both the vertical and horizontal planes. It's flat design provides high efficiency and low back lobes with minimal depth dimension.

### Applications:-

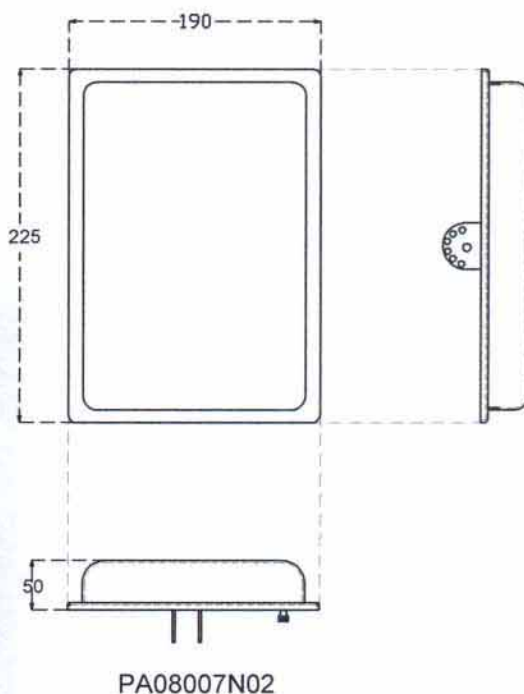
Outdoor long range point to point connection.

### Features:

- Compact in Size
- Field Proven
- Easy to install
- Cost effective
- Linear Polarization

### Electrical Specifications:

|                           |                       |
|---------------------------|-----------------------|
| Model No.                 | PA08007N02            |
| Frequency Range (Mhz)     | 824-960/1710-2250     |
| VSWR                      | 1:1.5                 |
| Power (Watts)             | 50                    |
| Impedance (ohms)          | 50                    |
| Gain (dBi)                | 7                     |
| Polarization ration       | Horizontal / Vertical |
| Front to Back ration (dB) | 16                    |
| H.P.B.W                   | 70°                   |



### Mechanical Specifications:

|                                 |                                     |
|---------------------------------|-------------------------------------|
| Connector                       | N (Female)                          |
| Mounting Hardware Material      | MS                                  |
| Unit dimension (LXWXH)mm        | 200X190X225                         |
| Unit weight (Kgs)               | 1.2                                 |
| Unit Packed Dimension (LXWXH)mm | 265X210X130                         |
| Unit Packed weight (Kgs)        | 1.5                                 |
| Radome Material                 | ABS Glass filled with UV Protection |

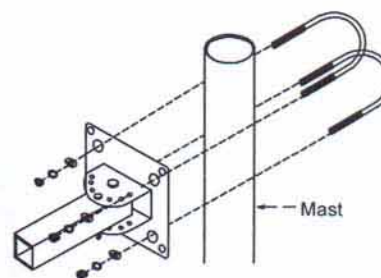


fig: Mounting Guide

Due to continous improvement policy and efforts, dimensions are subject to change for further improvement.