

Patch Panel Antennas

2400-2500 Mhz, 13dBi Gain, Patch Antenna

Product Description:

Patch Antenna's are quite directional as they have most of their power radiated in one direction in both the vertical and horizontal planes. It's flat design provides high efficiency and low back lobes with minimal depth dimension.

Applications:-

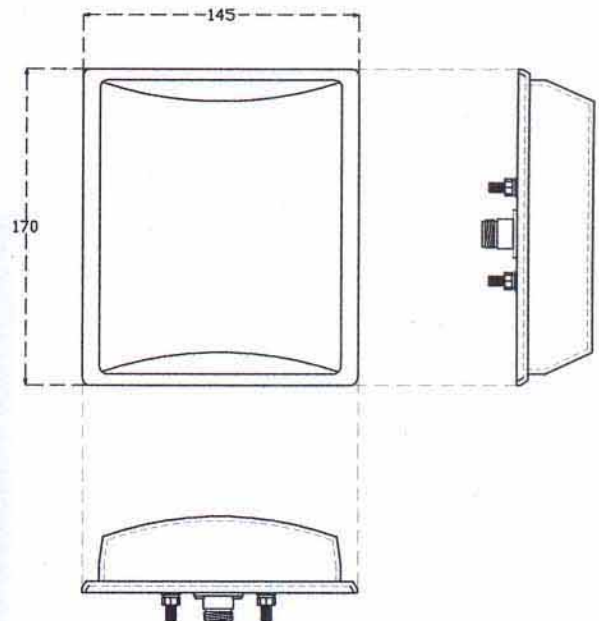
Outdoor long range point to point connection.

Features:

- Compact in Size
- Field Proven
- Easy to install
- Cost effective
- Linear Polarization

Electrical Specifications:

Model No.	PA24013N02
Frequency Range (Mhz)	2400-2500
Return Loss (dB)	>15
Power (Watts)	50
Impedance (ohms)	50
Gain (dBi)	13
Polarization ration	Horizontal / Vertical
Front to Back ration (dB)	>25
Horizontal Beam width	30°
Vertical Beam width	34°



PA24013N02

Mechanical Specifications:

Connector	N (Female)
Mounting Hardware Material	MS
Unit dimension (LXWXH)	180X145X170mm
Unit weight (Kgs)	0.7
Unit Packed Dimension (LXWXH)	200X180X110mm
Unit Packed weight (Kgs)	0.9
Radome Material	ABS Glass filled with UV Protection

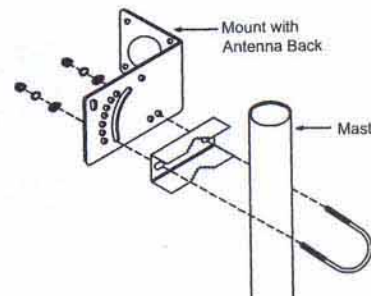


fig: Mounting Guide

Due to continuous improvement policy and efforts, dimensions are subject to change for further improvement.