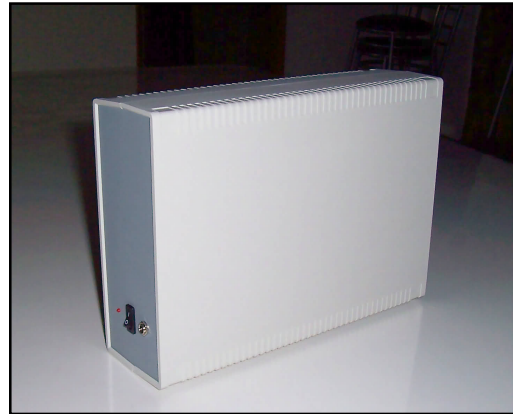


Very High Power Jammer for American cellular systems

Specifications:

Available country & area	America, Central American, etc.
Frequency band	806 - 894 MHz, 1850 - 1990 MHz
Effective range	Up to 60 meters radius, depending on the strength and type of cellular system
Input power	100 - 240V AC
Signal source	PLL synthesized
Antenna	Internal
Operation temperature	0° to 50°
Humidity	5% to 80%
Size	L 280 x W 200 x T 80 mm

- ▶ This new jammer series is designed for the American cellular systems (networks): 800 MHz / 1900 MHz.
- ▶ This device utilizes a unique low power radio signal technology that interferes with the communication between cellular handset and cellular base station.
- ▶ Block all cellular phone communication in your controlled area or to avoid information being disclosed secretly during meetings. And yet, it is jamming silently without cellular phone users' awareness.
- ▶ Easily operated and user-friendly, no hassle installation needed, need no professional knowledge or skill, a DIY designed device to suit everyone, everywhere and anytime.



Jamming distance (coverage):

D-AMPS 800, TDMA 800	PCS 1900, GSM 1900, DCS 1900, TDMA 1900	CDMA 800, IDEN 800	CDMA 1900
up to 60M radius	up to 60M radius	up to 40M radius	up to 40M radius

* **Remarks:** The above jamming distances are for reference only, actual jamming distance will be varied depending on the strength and type of cellular system.

About CDMA cellular system

CDMA is a smarter cellular system than GSM or TDMA or PCS, etc. It is more difficult to jam the CDMA communication.

Under same base station signal strength, the jamming distance of CDMA will be shorter or even half than TDMA or GSM or PCS, etc.

Available cellular system:

- | | |
|---|---|
| <ol style="list-style-type: none"> 1. iDEN (806 - 869 MHz) 2. CDMA 800 (824 - 894 MHz) 3. D-AMPS (824 - 894 MHz) 4. PCS (1850 - 1990 MHz) 5. GSM (1850 - 1990 MHz) 6. DCS (1850 - 1990 MHz) | <ol style="list-style-type: none"> 7. CDMA 1900 (1850 - 1990 MHz) 8. TDMA (824 - 894 MHz, 1850 - 1990 MHz) 9. GSM 900 (890 - 960 MHz) 10. NMT 900 (890 - 960 MHz) 11. DCS 1800 (1710 - 1880 MHz) 12. GSM 1800 (1710 - 1880 MHz) |
|---|---|

Application:

- Hospital, medical center, medical instruments should not disturbance by cellular signal.
- Theater, cinema, museum and art gallery.
- Conference rooms, offices, libraries, schools and restaurant